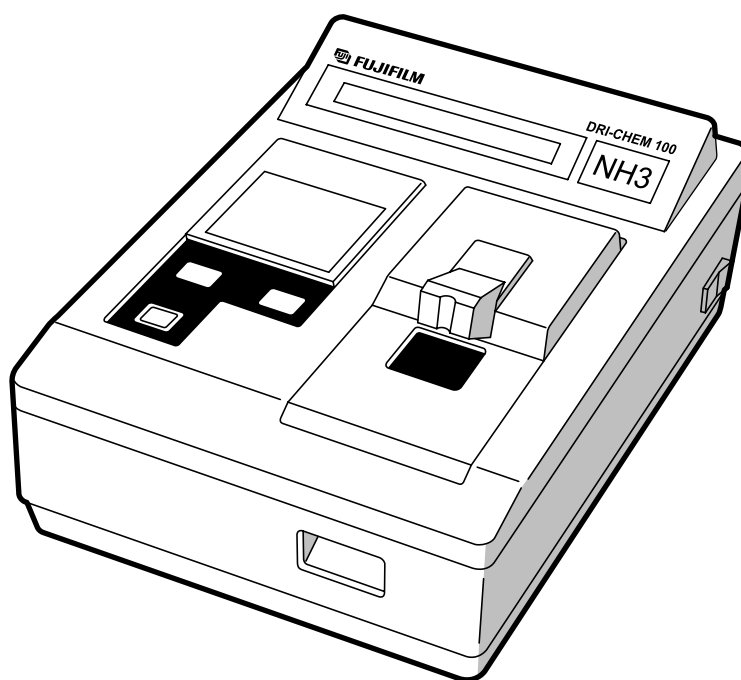




SPARE PARTS LIST

FUJI DRI-CHEM 100

TYPE N



- FOR CHINA -

First Edition



CAUTION:

The Parts List is intended for exclusive use by technical service personnel authorized by Fuji Photo Film Co., Ltd. (including personnel to whom technical servicing is commissioned by Fuji Photo Film Co., Ltd.).

To avoid possible electric shock or other personal injury, anyone else but the authorized technical service personnel must in no case be allowed to attempt to gain access to the interior of the equipment by screwing the cover or other parts off, using the Parts List as a guide.

Use of the Parts List by anyone else but the authorized technical service personnel should be forbidden.

- 1 The necessary replacement part should be sought from the exploded drawing of the pertinent section of the instrument.
- 2 The exploded drawing numbers correspond to the drawing reference numbers in the parts lists.
From the parts lists, record the part number and name, but also the instrument name and serial number should be provided.

NOTE: Improved part substitutions will in certain instances result in part number changes without prior notice.

NOTE: The numbers indicated in the parts list "Qty" column indicate the quantity of the designated part used in each unit.

STANDARD MARKING SYSTEM CHART FOR METALFASTENINGS

These screws, bolts and nuts are ISO metric screw thread.

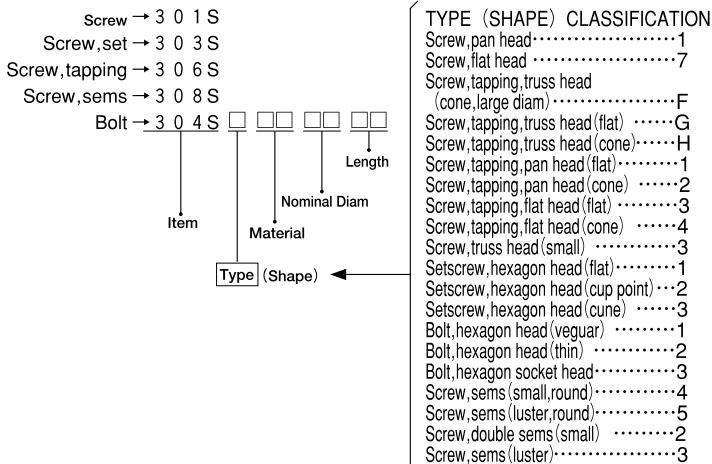
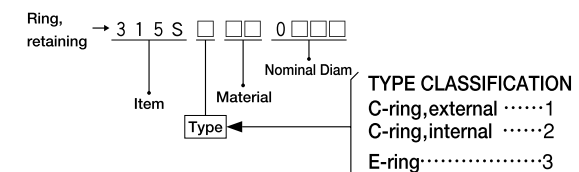
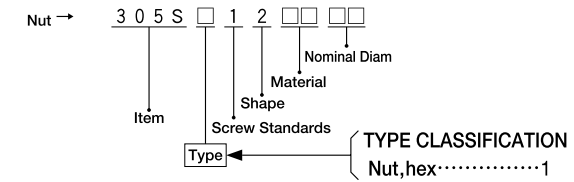
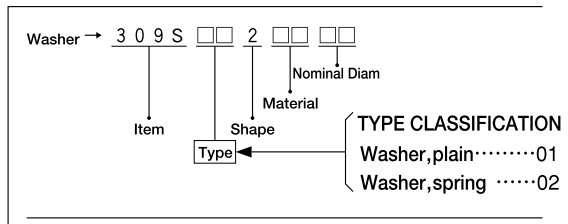
(The table belows classifies M4 screws. For information on other screws see the guide to screw classification.)

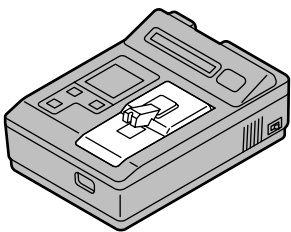
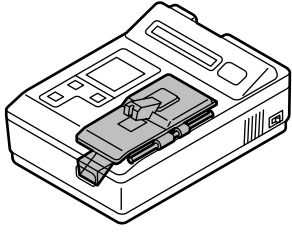
DRAWINGS REFERENCE NO.	PART NAME	SYMBOL	PART NO (EXAMPLE)	SYMBOL USED IN FIG. (EXAMPLE)	NOTE	SHAPE
1	Screw, flat head	S	301S7000410	* S 4 × 10	M 4 × 10	1. Screw, flat head S
2	Screw, pan head	N	301S1000410	* N 4 × 10	M 4 × 10	2. Screw, pan head N
3	Screw, truss head	T	301S3000410	* T 4 × 10	M 4 × 10	3. Screw, truss head T
4	Screw, tapping, flat head	STa	306S3000410	* STa 4 × 10	M 4 × 10	4. Screw, tapping, flat head STa
5	Screw, tapping, pan head	NTa	306S1000410	* NTa 4 × 10	M 4 × 10	5. Screw, tapping, pan head NTa
6	Screw, tapping, truss head	TTa	306SF000410	* TTa 4 × 10	M 4 × 10	6. Screw, tapping, truss head TTa
7	Setscrew hex socket head (cup point)	PK	303S2000410	* PK 4 × 10	M 4 × 10	7. Setscrew hex socket head (cup point) PK
8	Setscrew hex socket head (cone point)	PT	303S3000410	* PT 4 × 10	M 4 × 10	8. Setscrew hex socket head (cone point) PT
9	Setscrew hex socket head (flat point)	PH	303S1000410	* PH 4 × 10	M 4 × 10	9. Setscrew hex socket head (flat point) PH
10	Setscrew slotted head (cup point)	FK	302S2000405	* FK 4 × 5	M 4 × 5	10. Setscrew slotted head (cup point) FK
11	Setscrew slotted head (cone point)	FT	302S3000405	* FT 4 × 5	M 4 × 5	11. Setscrew slotted head (cone point) FT
12	Setscrew slotted head (flat point)	FH	302S1000405	* FH 4 × 5	M 4 × 5	12. Setscrew slotted head (flat point) FH
13	Bolt, hex head	R	304S1000410	* R 4 × 10	M 4 × 10	13. Bolt, hex head R
14	Bolt, hex socket head	Q	304S3000410	* Q 4 × 10	M 4 × 10	14. Bolt, hex socket head Q
15	Nut, hex	Na	305S1120004	Na 4	M 4	15. Nut, hex Na
16	Washer, plain	W	309S0120004	* W 4	M 4	16. Washer, plain W
17	Washer, spring	SW	309S0220004	* SW 4	M 4	17. Washer, spring SW
18	E-ring	E	315S3000040	* E 4	Nominal diam. φ 4	18. E-ring E
19	External ring	CG	315S1000040	* CG 4	Nominal diam. φ 4	19. External ring CG
20	Internal ring	CA	315S2000040	* CA 4	Nominal diam. φ 4	20. Internal ring CA
21	Plastic washer	CP	309S0129204	CP 4	Nominal diam. φ 4	21. Plastic washer CP
22	Plastic ring	KP	315S1920040	KP 4	Nominal diam. φ 4	22. Plastic ring KP
23	Screw, sems	A	308S1000410	A 4 × 10	M 4 × 10, with flat and washer	23. Screw, sems A
24	Screw, double sems	B	308S2000410	B 4 × 10	M 4 × 10, with flat and spring washer	24. Screw, double sems B
25	Deltight screw (cone point)	D	53K882260	D 4 × 8	M 4 × 8	25. Deltight screw D (cone point)
26	Screw, TP	TP	308S0051	TP 3 × 6	M 3 × 6	26. Screw, TP TP
27	Bolt, cross-recessed hex head double sems	BR	308S2180308	BR 3 × 8	M 3 × 8	27. Bolt, cross-recessed hex head double sems BR
28	Double point	WP	303S3950305	WP 3 × 5	M 3 × 5	28. Double point WP
29	Pulax	PLX	306S0011	PLX 3 × 6	M 3 × 6	29. Pulax PLX


● MATERIAL INDICATING MARK

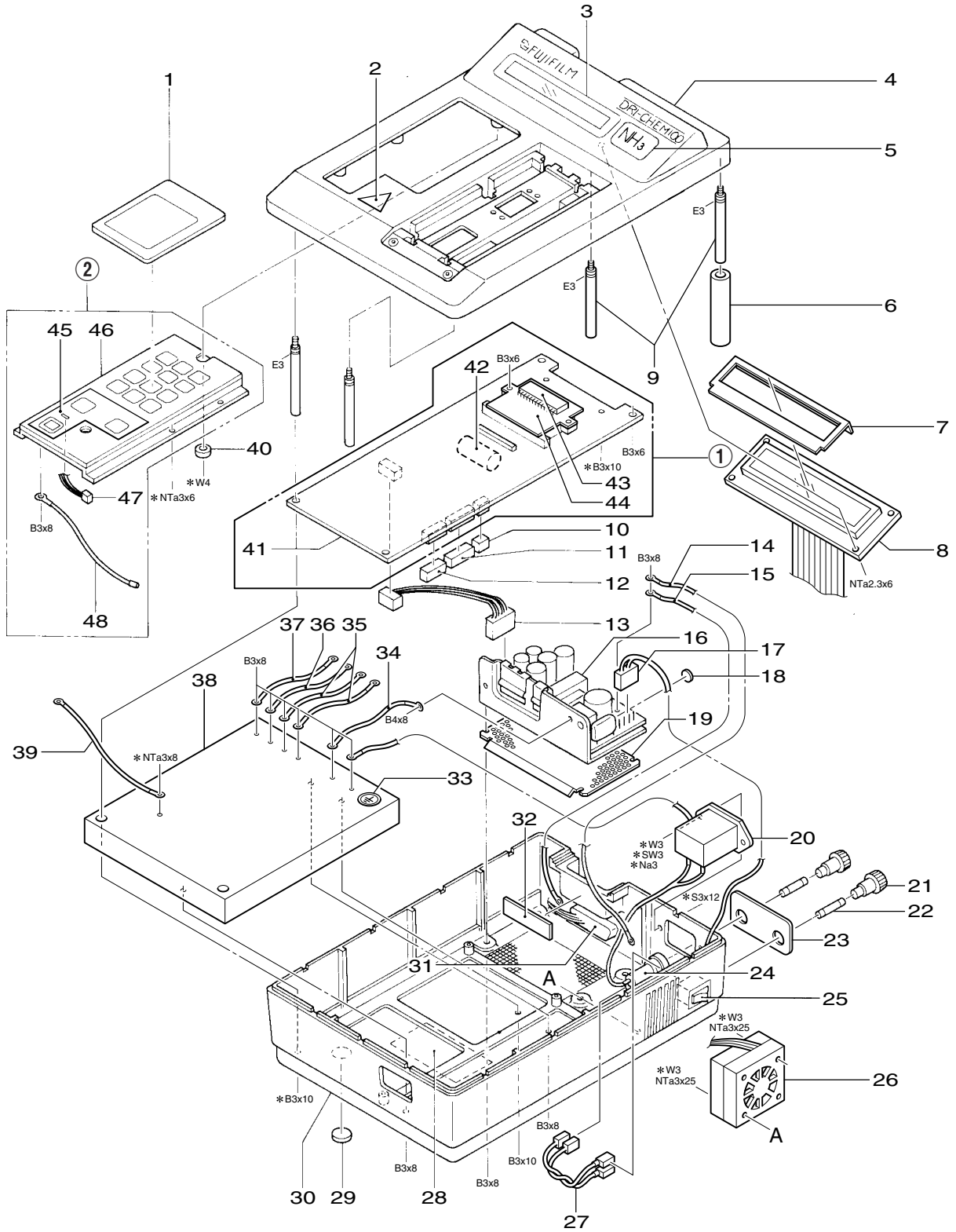
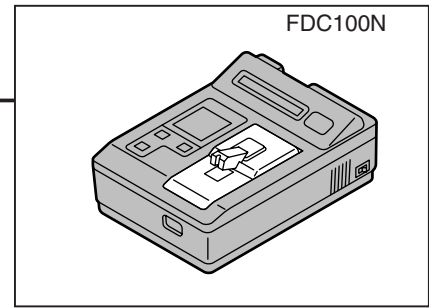
MATERIAL	MARK ADDED TO PART SYMBOL	EXAMPLE	MATERIAL CODE
Iron Chromate	Not used	N4	11
SUS304	*	* N4	00
SUS316	**	** N4	05
Titanium	***	*** N4	80
Iron nickel	Shape-indicating, symbol enclosed in a circle	(N4)	10
Iron (black oxide coating)	Shape-indicating, symbol enclosed in a square	[N4]	12
Brass nickel	Shape-indicating, symbol enclosed in a triangle	△N4	55
Plastic	●	●CP	92

● DECIPHERING THE IDENTIFICATION MARKINGS OF METAL FASTENINGS

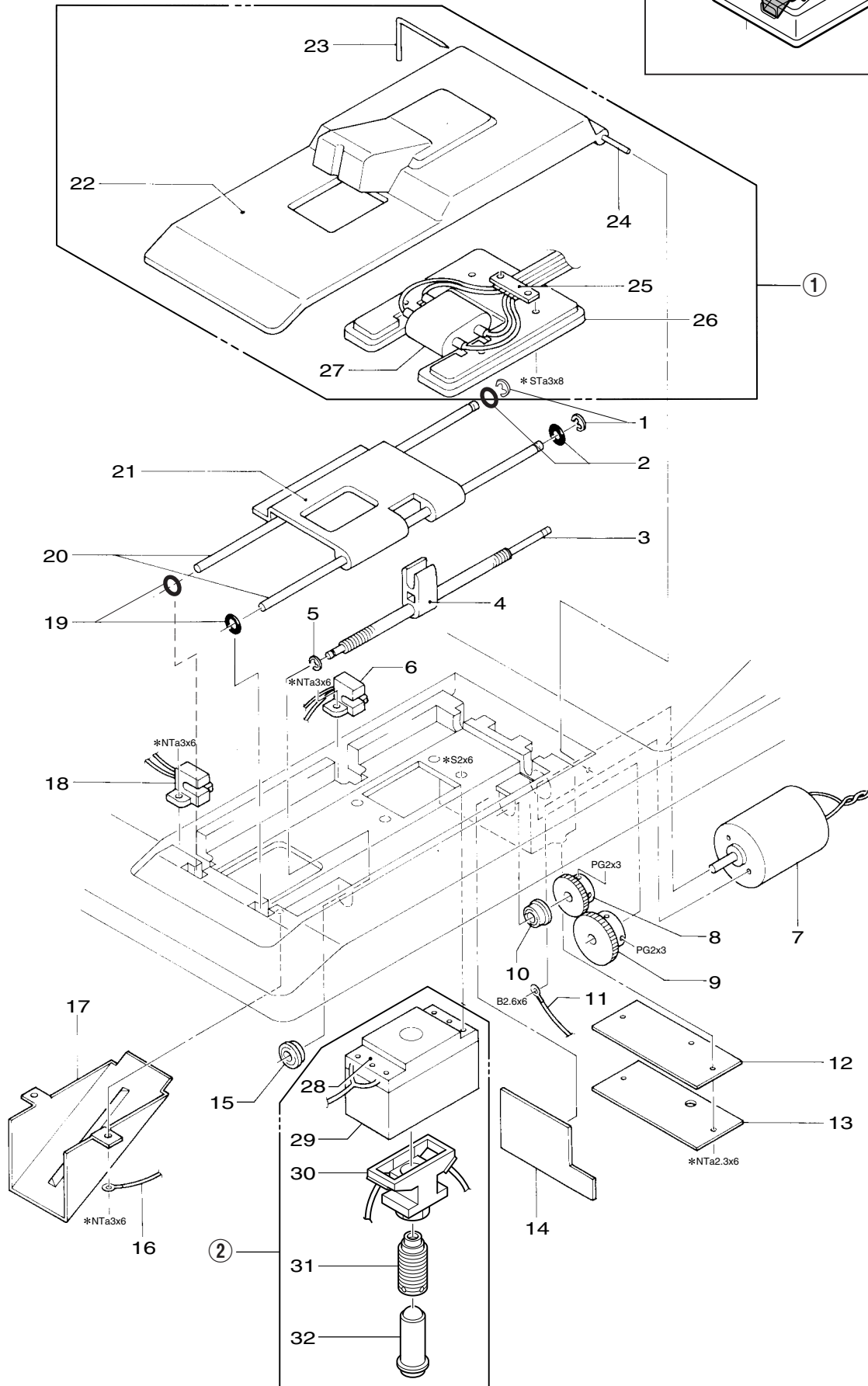
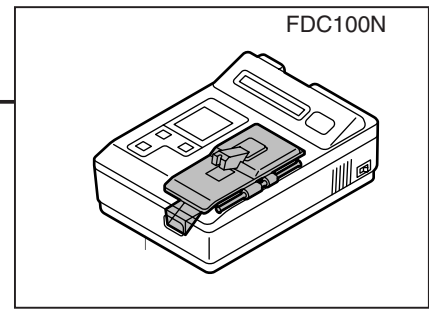


<p>INDEX 01 Cover Assembly</p> 	<p>INDEX 02 Incubator</p> 	<p>INDEX 03 Accessories</p>
<p>INDEX 04 Part No. Index List</p>		

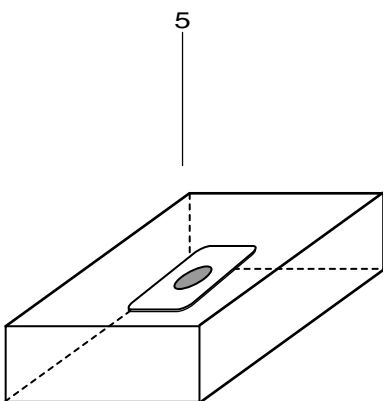
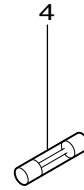
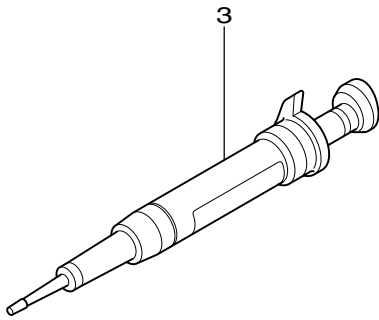
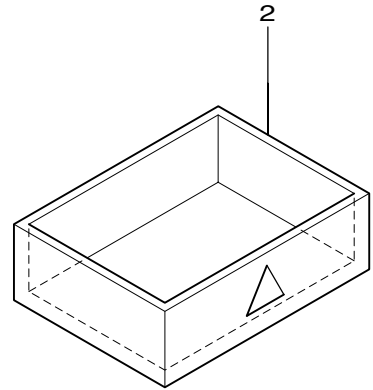
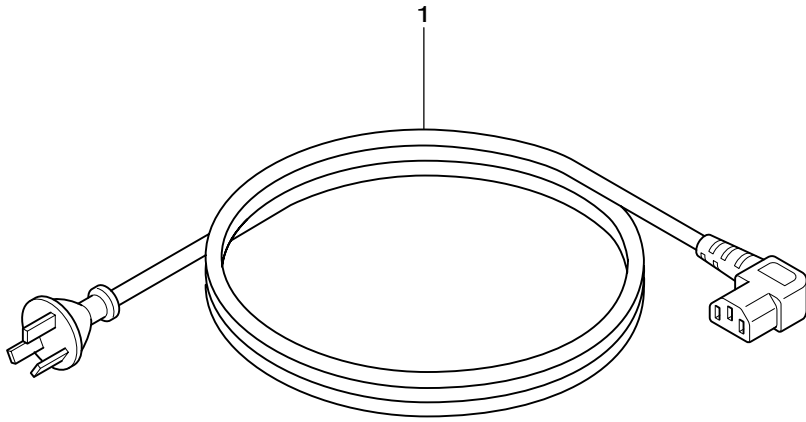
NOTE: Remember that the exploded view parts are shaded  can only be supplied as unitized blocks.



Ref. No.	Part No.	Part Name	Qty	Remarks	SYSMEX CODE
02	405F10180A	Label (BIOHAZARD)	1		669-1134-6
08	849F0045	LCD	1	LCD display	669-1127-0
16	125F0060	Power supply	1		669-1099-2
22	137S1043010	Fuse	2	AC250V M 1A	669-1137-7
26	119F1107A	Fan Assy	1		669-1093-1
45	405F7973	Label	1		669-1115-5
①	857H0042B	STA BOARD	1		669-1131-5
②	845F1017B	Keyboard Assy	1	Excluding No.45	669-1126-6



Ref. No.	Part No.	Part Name	Qty	Remarks	SYSMEX CODE



Ref. No.	Part No.	Part Name	Qty	Remarks	SYSMEX CODE
01	136F10025	Power cable	1		669-1136-3
04	137S1043010	Fuse	2	AC250V M 1A	669-1137-7
05	611F0016	OD Check plate	1		669-1165-1

Part No.	Index No. - Ref. No.	SYSMEX CODE	Part No.	Index No. - Ref. No.	SYSMEX CODE
119F1107A	01-26	669-1093-1	405F7973	01-45	669-1115-5
125F0060	01-16	669-1099-2	611F0016	03-05	669-1165-1
136F10025	03-01	669-1136-3	845F1017B	01-②	669-1126-6
137S1043010	01-22	669-1137-7	849F0045	01-08	669-1127-0
137S1043010	03-04	669-1137-7	857H0042B	01-①	669-1131-5
405F10180A	01-02	669-1134-6			



FUJI PHOTO FILM CO., LTD.